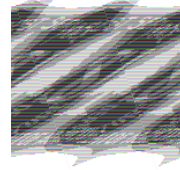

OUTREACH NOTICE
SOUTHERN SIERRA PROVINCE
Sierra National Forest
Supervisor's Office
Clovis, California



Ecologist, GS-408-12

The Southern Sierra Province of the Forest Service's Pacific Southwest Region is in the process of hiring a Province Ecologist to be stationed in Clovis, CA. The position is for permanent, full-time employment with a starting salary of \$63,417 to \$82,446

DUTIES: The Province Ecologist is the Province expert in vegetation and fire ecology, and is professionally involved in addressing a wide range of ecological issues across the Stanislaus, Sierra and Sequoia National Forests. The Southern Sierra Province encompasses the western slope of the Sierra Nevada from the Mokelumne River to the southern end of the range, an area of about 3.5 million acres of mountainous terrain which includes extremely high geographic and ecological diversity. Major duties will include:

- Coordinates with the Regional Ecologist and the Forests comprising the Province with respect to all facets of the Province Ecologist's program of work
- Provides ecological expertise and technical assistance for Forest Service projects and planning efforts. Incorporates ecological principles into decision making.
- Develops ecological monitoring programs to collect, analyze, and interpret data to help guide Forest Service activities through an adaptive management framework.
- Evaluates the effect of forest management practices including grazing, prescribed burning, and silvicultural treatments on a diverse range of ecosystems.
- Integrates information from separate disciplines such as botany, hydrology, geology, soils, and wildlife, including historic and legacy data, for use in assessing current conditions, detecting trends, developing reference conditions, and developing desired future conditions for use in planning and implementing forest projects.
- Conducts fire monitoring and modeling, including evaluations of fire behavior, fuel loading, fire effects, and patterns of fire severity. Provides ecological input into fuels treatment planning.
- Conducts classification and mapping of vegetation types, fire regimes, and potential natural vegetation.
- Uses statistically sound sampling and analytical methods, including multivariate techniques and modeling approaches, to evaluate complex environmental and biological patterns across large landscapes.
- Coordinates with district, forest, and regional staff to conduct integrated ecological monitoring and reporting programs. Develops field guides, brochures, GIS products, presentations, workshops, and other materials to facilitate the

transfer of ecological knowledge. Where appropriate, publishes findings in peer-reviewed scientific journals.

- Provides technical assistance with NEPA planning and implementation.

KNOWLEDGE AND SKILLS REQUIRED FOR THIS POSITION:

- Education: a Master's degree or higher in an ecological field of study involving vegetation and/or fire, or such long-term experience in the field of ecology that the applicant's level of knowledge is equivalent to that level of expertise.
- An ability to conduct practical, applied field and laboratory investigations of direct relevance to Forest Service managers, and to communicate findings in simple, straightforward terms to a wide variety of audiences.
- Broad knowledge of ecology and its application to management, including silviculture, range management, fuels and fire management, wildlife management and soils management. Must be able to apply the latest developments in ecology to solutions of a novel or controversial nature for which accepted or proven methods are not available.
- Must have an excellent background in, and strong facility with GIS software, multivariate statistics, ecological modeling, and database design and management.
- Knowledge of Federal, State and Agency laws and regulations pertaining to forest resource management.
- Excellent oral and written communication skills, including demonstrated success at grant writing and publishing papers in peer-reviewed journals.
- Wildland firefighting experience beneficial.

WORKING CONDITIONS:

Field and office work are about equally divided in a year; May-October is normally spent largely in the field. During this period the incumbent may be away from the duty station for extended periods. Working conditions may sometimes be difficult, including hiking over rough terrain in steep, rugged areas with exposure to heat, poison oak, poisonous snakes and insects.

AREA DESCRIPTION:

This position is stationed in Clovis, California.

COMMUNITY AND SURROUNDING AREA:

The Sierra National Forest lies in Central California, on the western slope of the Sierra Nevada mountain range. This 1.3 million-acre National Forest is bounded on the south by Sequoia Kings Canyon National Park and on the north by Yosemite National Park. The three National Forests served by the Province Ecology position contain some of the most scenic landscapes in the United States, ranging from the Sierra Foothills to some of the highest mountain peaks in the lower 48 States. The region offers endless opportunities for the outdoors enthusiast. Camping, fishing, swimming, sailing, boating, water skiing, whitewater rafting and kayaking, off highway vehicle travel, downhill and cross-country skiing, rock and mountain climbing, hiking, backpacking, hunting, and horseback riding are among the many activities which can be enjoyed on the Sierra.

Fresno's population is approximately 500,000 with a variety of amenities. The average cost of a home is \$230,000. Rental rates range from \$500 to \$1800 a month for 3-bedroom homes and from \$475 to \$1700 for 2-bedroom apartments. Its symphony, local theatre companies, music, and dance productions distinguish Fresno as a city with access to a wide variety of cultural events. Fresno Unified School District is the fifth largest district in California, with 65 elementary schools, 18 secondary schools, and 9 high schools. California State University, Fresno and Fresno City College are located within our community. There are most every denomination and affiliation of churches and religious entities within Fresno County.

The population of **Clovis**, located just east of Fresno, is approximately 85,000. It is midway between San Francisco and Los Angeles tucked inside the agriculturally rich San Joaquin Valley. The Clovis Unified School District, one of the highest rated school districts in the state, offers 17 elementary schools, 3 intermediate schools, and 3 high schools

The area has an estimated 195 days of sunshine, 71 partly cloudy and 99 cloudy. Temperatures in the winter usually range from 36 low to 65 high, though a few nights can get below freezing. In the summer, temperatures range from 64 to 97, with several days over 100 degrees.

Following are web pages that will help you discover some of the natural, cultural, and community information of our area:

<http://www.centralvalley.com/>

<http://www.fresnochamber.com/>

<http://www.clovischamber.com> **Fresno Area Hispanic Chamber of Commerce**

<http://www.ci.clovis.ca.us>

<http://www.ci.fresno.ca.us>

<http://www.shaverlakechamber.com/>

<http://www.explorefresno.com/savemartcenter.html>

<http://www.explorefresno.com/>

[**Fresno Folklore Society**](#)

[**Fresno Philharmonic**](#)

[**Fresno Filmworks**](#)

CONTACT: If you have any further questions about the position or the application process, please call: Hugh Safford, Regional Ecologist, at 707-562-8934 or email: hughsafford@fs.fed.us

HOW TO APPLY: The vacancy announcement will be advertised beginning the week of April 14, under the numbers: ADSO8-R5-SNFSO-03306G (for government employees) or ADSO8-R5-SNFSO-03306DP (for all US citizens). The easiest way to access the vacancy announcement is to go to the USAJOBS website after April 14, 2008. That will take you to the automated AVUE website. Here are the links for both USAJOBS and AVUE:

TO VIEW AVUE: <https://www.avuedigitalservices.com/usfs/applicant.html>

TO VIEW USAJOBS: <http://www.usajobs.opm.gov>

This outreach notice will expire on April 25, 2008. Those wishing to be considered for this position should apply through the process indicated above by the closing date of the vacancy announcement as referral lists will be pulled soon thereafter.